



NW-4G LTE Modem

Drop in replacement for Motorola G24 modem extends the life of your legacy system by upgrading to 4G LTE connectivity.

Between 2020 and 2025 most carriers will no longer support 2G and 3G connectivity, requiring companies to invest in system upgrades. NeuronicWorks Inc. has created the NW 4G LTE Modem as a drop-in solution to preserve legacy systems.

OUR PRODUCT

NW-4G LTE is a cellular communication modem designed to replace the Motorola G-series GSM modem. The modem mechanically fits in existing systems and allows to be connected with the same interfaces as the Motorola G24.

BENEFITS

Adopting the NW-4G LTE modem helps you:

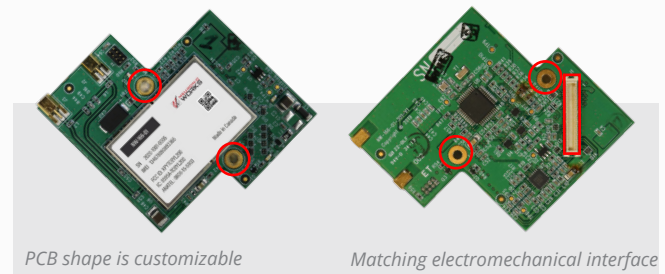
- Preserve your existing legacy system and extend its life.
- Save costs associated with acquiring, testing and integrating a new system.
- Maintain your systems and only update the cellular connectivity.

OUR SERVICE

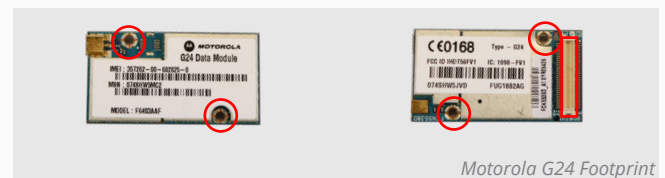
Our services include:

- Further hardware customization if needed (due to space constraints).
- System integration.
- Firmware updates if needed (for additional AT commands)

NW-4G LTE MODEM



MOTOROLA G24



Stay ahead of the 2G and 3G network sunset. Contact us today!

Titu Botos, VP of Engineering
 tbotos@neuronicworks.com
 1-647-637-4364

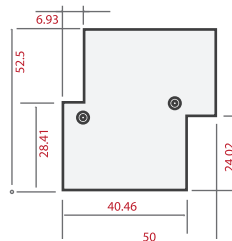
TECHNICAL SPECIFICATIONS

NW-4G LTE Modem

 Product No.: **NW-166-01**

Cellular communication	4G LTE CAT4, fallback to 3G UMTS/DC-HSPA+ and 2G GSM/(E)GPRS
4G LTE operating bands	2, 4, 5, 7, 17 (N. America) BW 1.4 - 20 MHz, MIMO 2x2, Rx diversity
3G UMTS/DC-HSPA+ bands (in MHz)	850/900/1700/1900/2100
2G GSM bands (in MHz)	850/900/1800/1900, 42 Mbit/s downlink, 5.76 Mbit/s uplink
Certifications and approvals	PTCRB, GCF, FCC, ISED, RED, AT&T, Anatel, Rogers (Canada), Verizon, T-Mobile
Cellular communication module	U-Blox TOBY-L2
UART serial port	Configuration, control and data transfer by AT messages
USB 2.0 port	<ul style="list-style-type: none"> Optional for AT messages Module firmware update
Commands	Mirrors selected commands of Motorola G-series GSM modems
SIM	Capable of 1.8V and 3.3V signalling
Interface connector	Molex 53748-0708, same as in the original G24 modem
RF Antenna ports	Two MMCX to support LTE MIMO and LTE/UMTS antenna diversity
Normal operating voltage range	+3.4V to +4.35V
Operating temperature range	-20°C to +60°C
Mechanical shock and vibrations	<ul style="list-style-type: none"> Per SAE/USCAR-2 Revision 6, Section 5.4.6 Per IEC 60068-2
MTBF	938022 hrs at 40°C, per stress method of TELCORDIA SR-332- ISSUE 3
Additional Requirements	Second LTE antenna LTE SIM Card from the Network Carrier The 2G/3G APN on the CopilotPC changed to an APN on LTE network

Dimensions:



All dimensions are in mm

Order options:

Evaluation sample:	1 unit
<small>(optional extended connector)</small>	

Standard unit MOQ:	10 units
Lead Time:	2-3 weeks

Custom shape MOQ :	50 units
Lead Time:	4-6 weeks